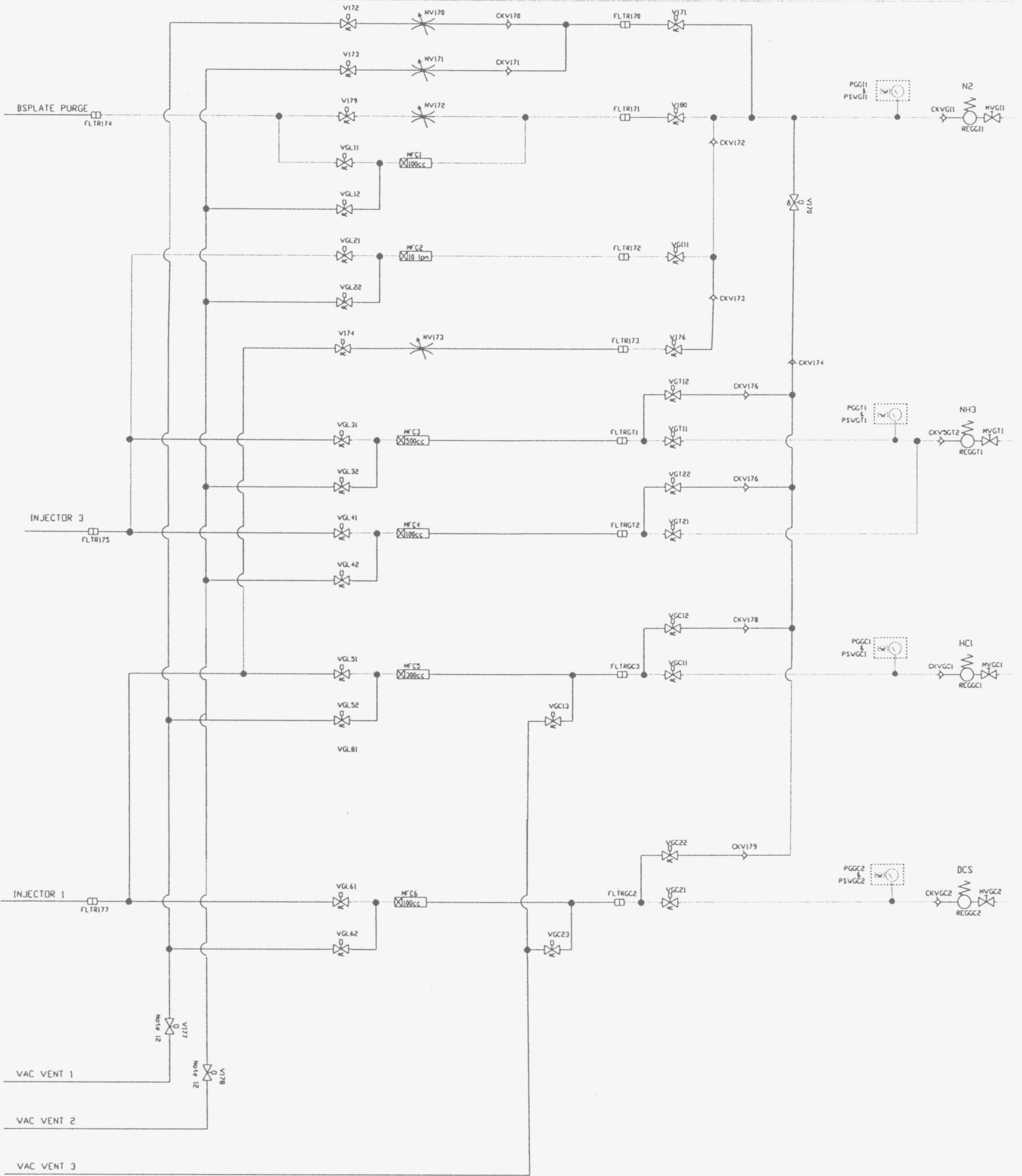


SEMITHERM
CONFIDENTIAL

CUSTOMER
APPROVAL

PROCESS ENG.
APPROVAL

SYSTEMS ENG.
APPROVAL



- NOTES
- 1) UNIT 1200 MFC's will be used for N2
 - 2) UNIT 1250 MFC's will be used for NH3, HCl, & DCS
 - 3) NV170,171,173, & 174 will be NuPro BMRG valves
 - 4) NV172 will be a NuPro 3MR needle valve.
 - 5) Manual valves will be NuPro series DA.
 - 6) Gas valves will be NuPro series 3N.
 - 7) Input regulators will be Tescom.
 - 8) Input gas filters will be Millipore Waterguard II.
 - 9) Check valves will be NuPro CW series.
 - 10) Pressure gauge/switches will be Spen IP-22
 - 11) Manufacture using orbital butt-weld connections except for MFC's and filters. MFC's and filter will use standard V&R connections.
 - 12) NC NuPro controlled by NO pilot valve functions as a normally open valve

SEMITHERM INC

TITLE GAS SCHEMATIC, 58218

DRAWN M JONES 12/07/94 DWG NO. 03GSA0

STATUS ASSY
S.C. NO. - REV. C DATE: 1/5/95
FILE: 58218G.DWG SHEET 1 OF 1